

4. Satz

Presto $\text{♩} = 66$ [$\text{♩} = 96$]

Musical notation for measures 8 to 26. Measure 8 is boxed. The key signature is one flat (B-flat), and the time signature is 3/4. The music starts with a double bar line. Dynamics include *f* (forte) and *dim.* (diminuendo). There are slurs and accents throughout the passage.

Musical notation for measures 38 to 43. Measure 38 is boxed. The key signature changes to two flats (B-flat and E-flat). The tempo is marked *Tempo I*. Dynamics include *f* and *ff* (fortissimo). The instruction *unis. b \flat* is present.

Musical notation for measures 44 to 54. Measure 44 is boxed. The tempo is marked *poco Adagio* with a *rit.* (ritardando) marking. Dynamics include *dim.* and *f*. The tempo returns to *Tempo I* after a double bar line.

Musical notation for measures 55 to 64. Measure 55 is boxed. The tempo is marked *Adagio cantabile*. Dynamics include *dim.*. The key signature changes to one flat (B-flat). The instruction *Fag. I* is present.

Musical notation for measures 65 to 71. Measure 65 is boxed. The tempo is marked *Tempo I Allegro*. The key signature changes to two sharps (F# and C#). Dynamics include *p* and *cresc.* (crescendo).

Musical notation for measures 72 to 76. Measure 72 is boxed. The tempo is marked *Allegro assai* with $\text{♩} = 80$. Dynamics include *ff*. The instruction *Fag. I* is present.

Musical notation for measures 77 to 85. Measure 79 is boxed. The tempo is marked *Tempo I Allegro*. The key signature changes to two sharps (F# and C#). Dynamics include *f*.

Musical notation for measures 86 to 90. Measure 86 is boxed. Dynamics include *sf* (sforzando). The key signature is two sharps (F# and C#).

Ouverture

Allegro [♩ = 76]

33

p *sf* *p* *sf* *p* *f*

36

p *f* *p* *f* *sf*

41

sf *sf*

45

sf

49

sf *sf*

87

f

92

109

p

112

117

f

120



125



151



155



159



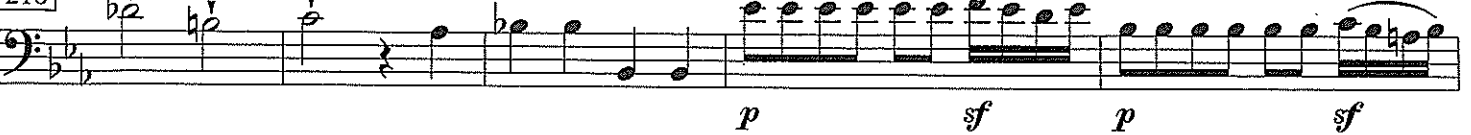
164



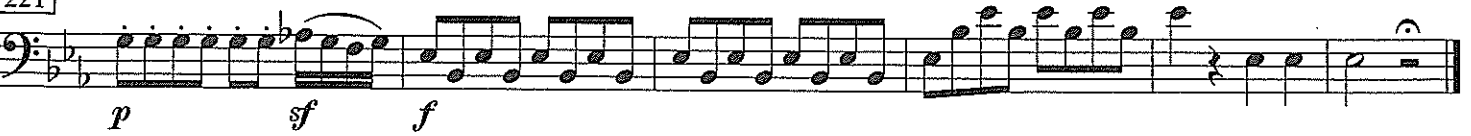
168



216



221



BPO 09/10 AUDITION EXTRACTS: DOUBLEBASS

3) Verdi: Othello

Poco più mosso ♩ = 80 [♩ = 66]

Ⓚ legato con sord.

pp *tutti un poco marcato*

piu marc. *f* *ppp*

dim. *p* *stacc.* *un poco piu marc. e cresc.*

f cresc. *ff*

BPO 09/10 AUDITION EXTRACTS: DOUBLEBASS

4) Mahler: Symphony No. 1

Feierlich und gemessen,
ohne zu schleppen [♩ = 60]

D-Dur / D major

Pauken

1. Solo

pp *p mit Dämpfer*

BPO 09/10 AUDITION EXTRACTS: DOUBLEBASS

5) Berg: Wozzeck

Langsam [♩ = 56]

rit.

55

1. Solo

pp (mit Dämpfer) *Griffbrett*

Vivo ♩ = 132-138 1. Solo

85 *ff*

86 *fff* *sim.*

87 *f* au talon

88 *ff* *gliss.* 1. 2.

89

90 *très fort (détachè)*

91 *dolce*

92

93 *ff risoluto, energico*

Detailed description: This is a page of musical notation for a double bass solo. It consists of ten staves of music, numbered 85 through 93. The key signature has one flat (B-flat) and the time signature is 2/4. The tempo is marked 'Vivo' with a quarter note equal to 132-138 beats per minute. The first staff (85) begins with a double bar line and a repeat sign, followed by a series of eighth notes with accents, marked *ff*. The second staff (86) continues with eighth notes, marked *fff* and *sim.* (sustained). The third staff (87) features eighth notes with accents, marked *f*, and includes the instruction 'au talon'. The fourth staff (88) contains a glissando ('gliss.') and a first/second ending bracket, marked *ff*. The fifth staff (89) continues with eighth notes and accents. The sixth staff (90) has eighth notes with accents, marked *très fort (détachè)*. The seventh staff (91) features eighth notes with accents, marked *dolce*. The eighth staff (92) continues with eighth notes and accents. The ninth staff (93) begins with a double bar line and a repeat sign, followed by eighth notes with accents, marked *ff risoluto, energico*. The piece concludes with a double bar line.